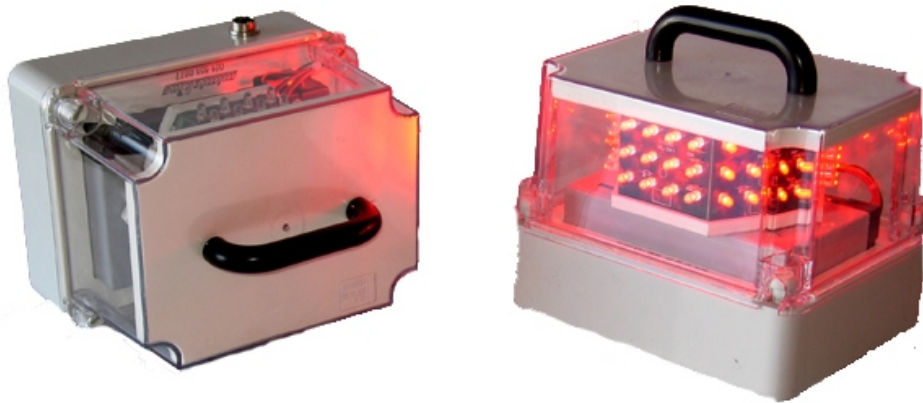


# *mimicking*

Rechargeable LED Warning Light With Magnetic Base.



Model:	MCC 100-R (Red)
LED's:	6 Modules with 12 High Bright Led's each in Hexagonal Configuration
Colours:	Available in Red, Blue, White & Orange (Amber)
Voltage:	Supply Voltage 12VDC - Rechargeable Battery 12V 7Ah
Flashing Rate:	LED's "On" 500 - 2000mS, Interval "Off" 100 - 1000mS (Adjustable)
Current Consumption:	Min 20mA (LED's Off) Max 300mA (LED's On)
Mounting:	Magnetic Base Steel Capped Magnet 80mm dia.
Charging:	Charging socket fitted with Green LED indication. Connect 16VAC Transformer 15VA
CAUTION:	Unit is designed to accept maintenance charge only (trickle charge) If the battery is flat it should be removed from the unit for charging purposes.
Operation:	Tilt unit upright to switch "On" and tilt on side to switch "Off"
Duty Cycle:	Approx. 20 Hrs continuous flashing (fully charged battery)
Optional:	3 Colour Unit (Switch Selectable) & Tripod mounting